



# **2024 Open Call for Investigator-initiated Projects**

---

Research and Data Analytics Office  
Health Bureau  
January 2025

# Outline

---

- **Overview of the Health and Medical Research Fund (HMRF)**
- **Funding Scope**
- **Thematic Priorities**
- **Submission and Timeline**
- **Funding Decision**
- **Project Commencement**
- **Examples of Early Rejected Applications**



# Overview of HMRF

---

## Establishment

- Dec 2011
- Consolidation of former funds\*

## Operation

- Annual basis – Open Calls
- Policy driven – Commissioned programmes

\*Former funds:

- Health and Health Services Research Fund (HHSRF)
- Research Fund for the Control of Infectious Diseases (RFCID)
- Health Care and Promotion Fund (HCPF)

# Mission

---

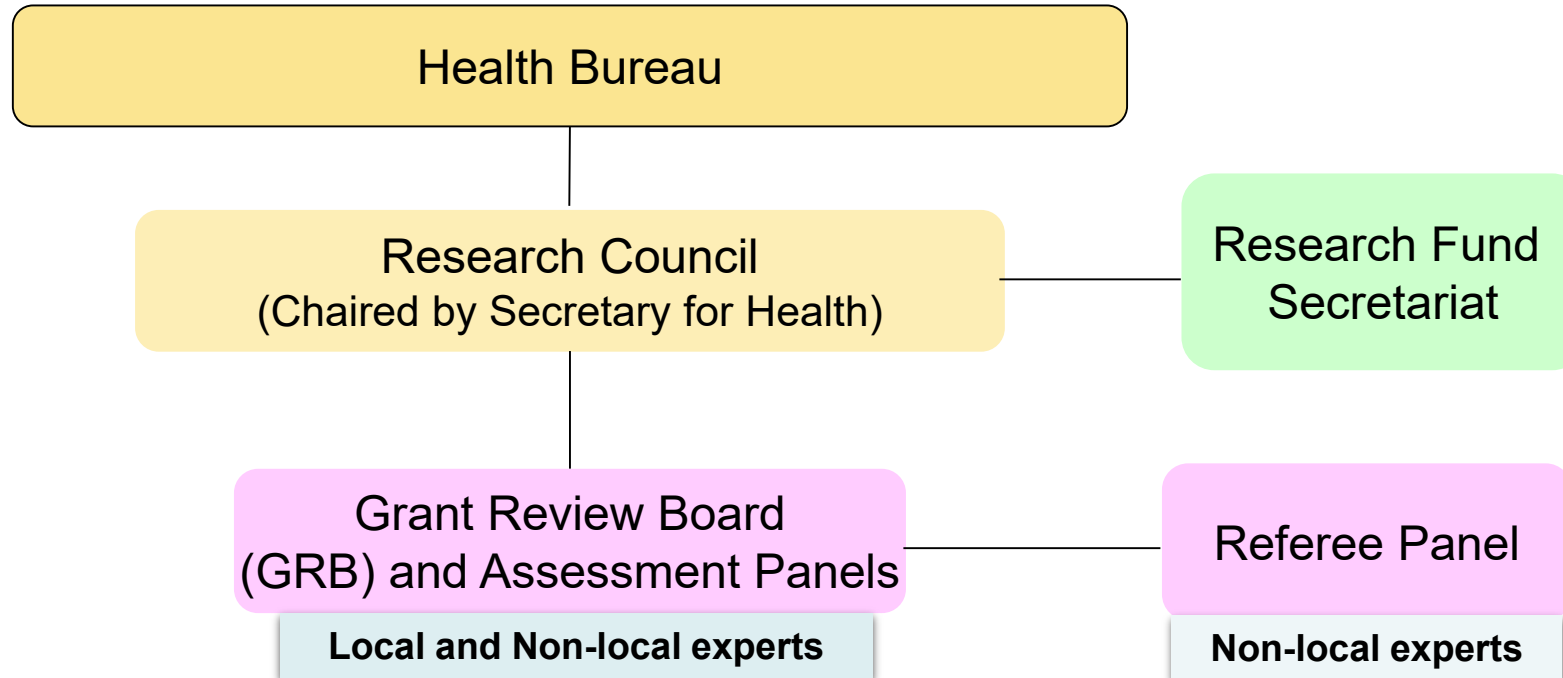
◆ Build research capacity and to encourage, facilitate and support **health and medical research** to:

- Inform health policies
- Improve population health
- Strengthen the healthcare system
- Enhance healthcare practices
- Advance standard and quality of care
- Promote clinical excellence

... through generation and application of **evidence-based scientific knowledge** derived from local research in health and medicine.

◆ Funding support to **evidence-based health promotion projects** that help people **adopt healthier lifestyles** by enhancing awareness, changing adverse health behaviours and creating a conducive environment that supports good health practices.

# Governance Structure



Governing body     Technical arm     Executive arm



# Funding Scope

---

# Emphasise translational potential of research findings

## Supports applications on the following research projects -

### Clinical research

- Including patient-oriented research, epidemiological and behavioural studies, outcomes research and health services research

### Infectious diseases research with public health implications

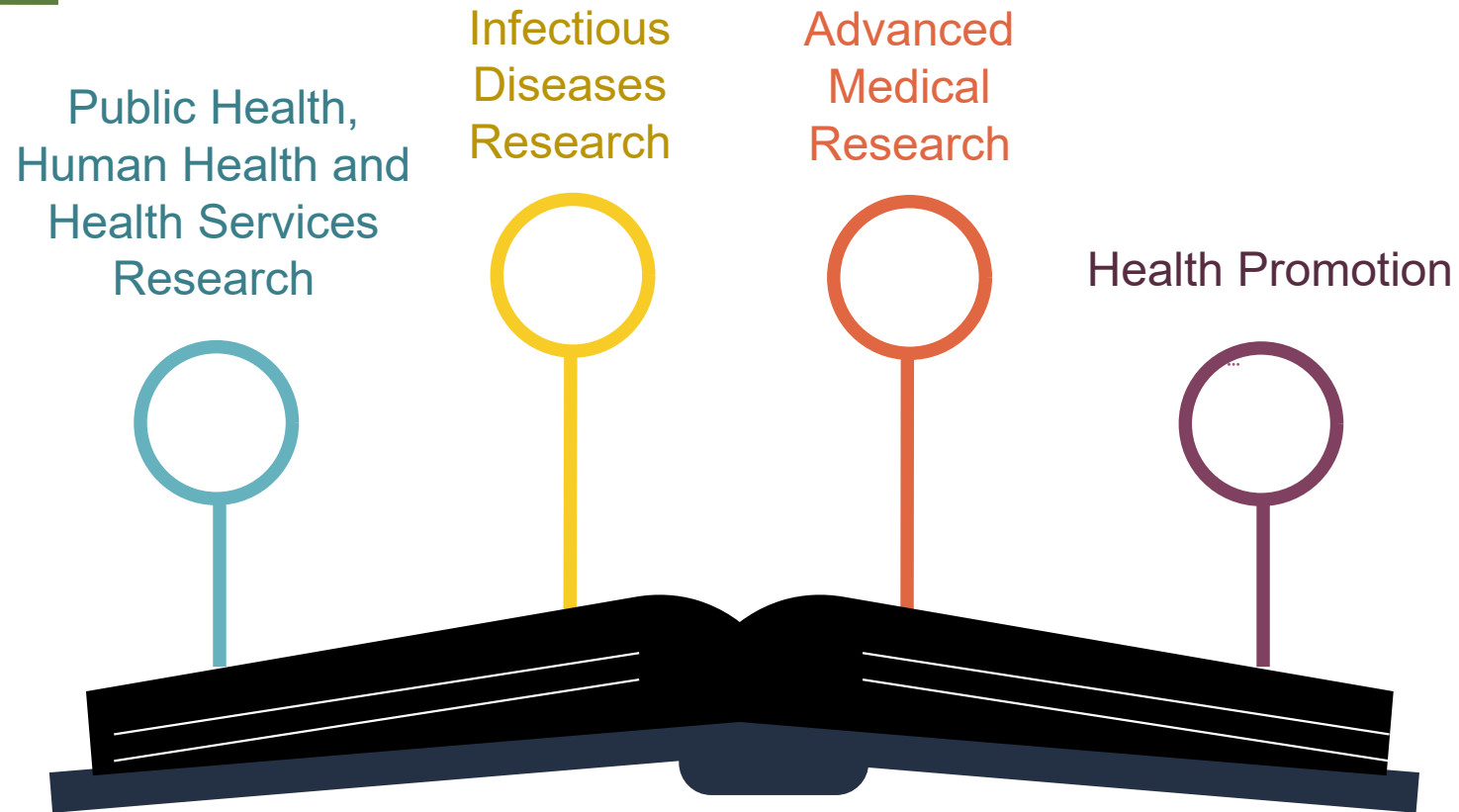
- From bench to bedside and at community level and with translational value

### Chinese medicine - clinical research

- Based on Chinese medicine theory, or
- On Chinese medicine theory and methodology

# Areas of Projects

---





# Public Health, Human Health and Health Services Research

## Public Health

- To **enhance prevention and treatment** and so improve population health

## Health Services

- To determine which interventions and services are **effective and cost-effective** in the local healthcare setting

## Chinese Medicine

- Must be **clinical research** which is based on Chinese medicine theory or clinical research on Chinese medicine theory and methodology

# Infectious Diseases Research

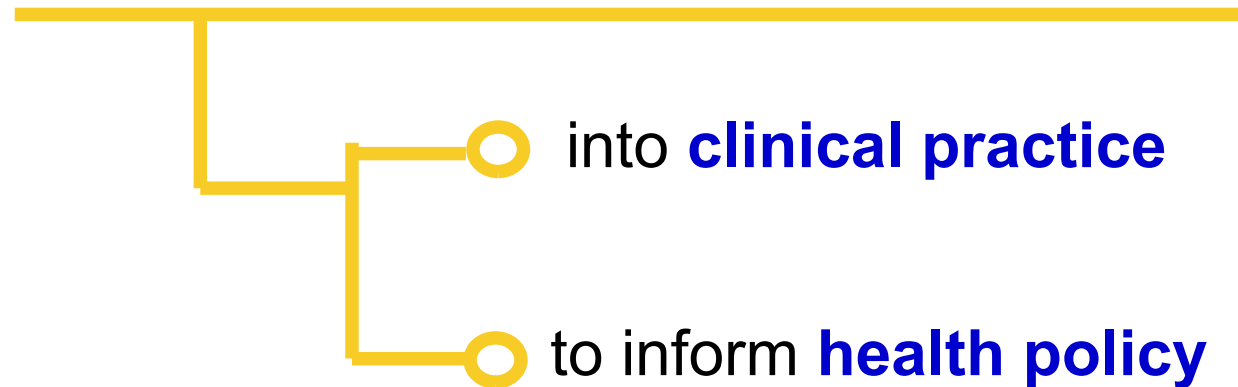
Support research proposals:

- Focus on those infectious diseases that are **prevalent** in or **pose threat** to Hong Kong and neighbouring areas
- With **public health implications** from bench to bedside and at community level
- With **translational value**

# Advanced Medical Research

## ➤ **Clinical Studies**

- **Apply advance technologies to facilitate** the translation of knowledge generated from health and health services or infectious diseases studies

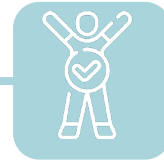


# Health Promotion

Based on **scientific evidence** and evaluated in a systematic way



Pre-set criteria for process and outcome evaluation based on the **RE-AIM framework** are required.



Include a coordinated set of activities that help people adopt **healthier lifestyles** by enhancing awareness, changing adverse health behaviours and creating a conducive environment that supports good health practices

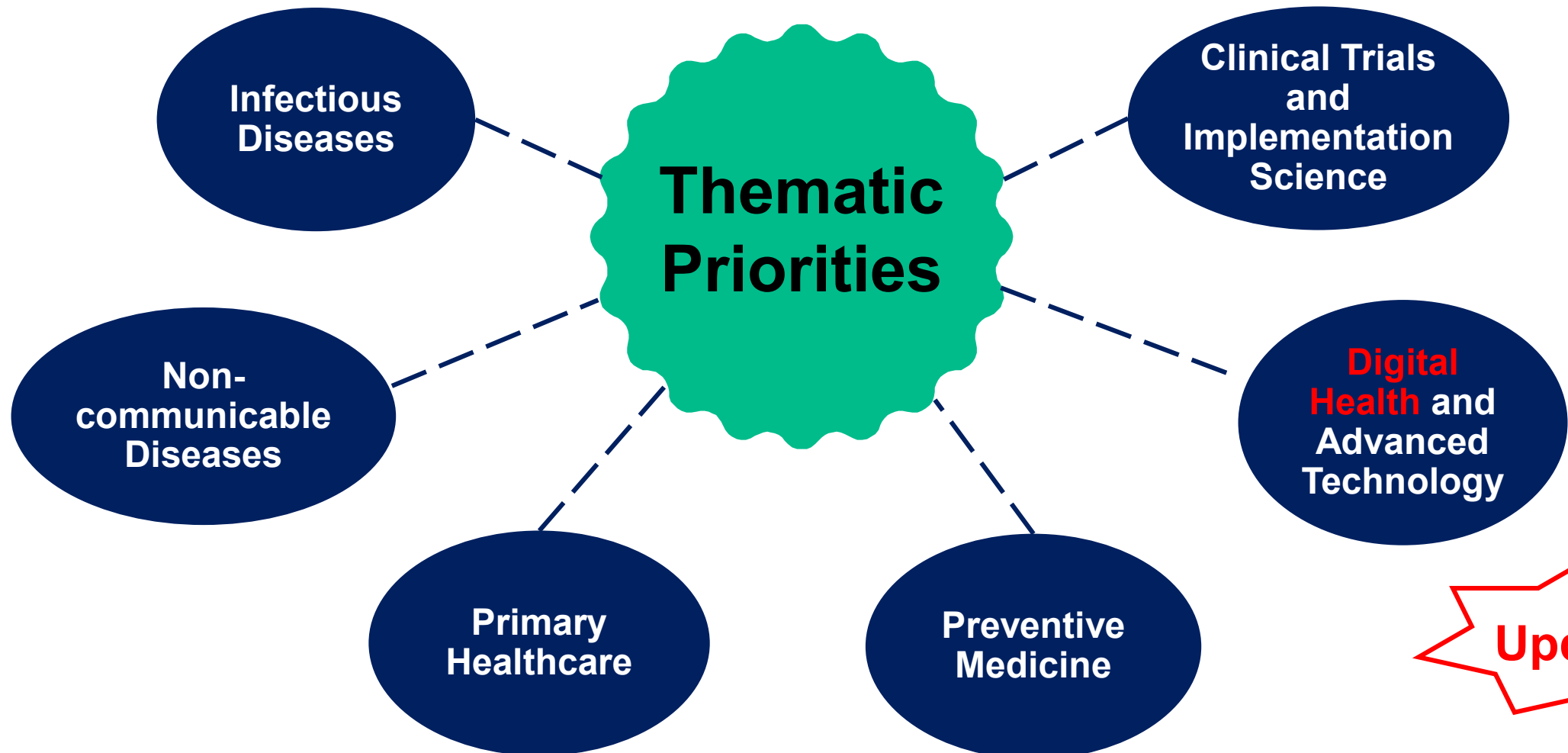
- **Reach, Effectiveness, Adoption, Implementation, Maintenance/ sustainability**



# **Thematic Priorities**

---

# Thematic Priorities for 2024 HMRF Open Call

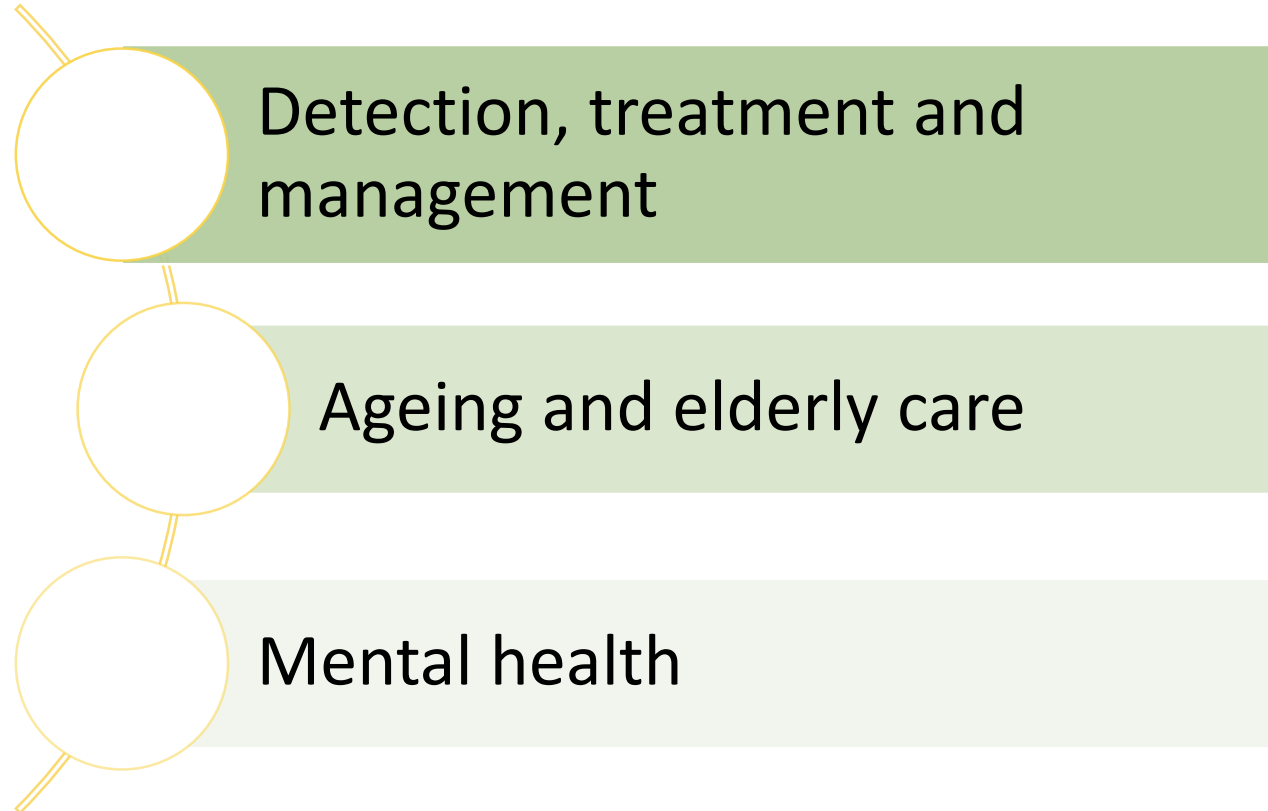


**Updated**

# A. Infectious Diseases



# B. Non-communicable Diseases






# B. Non-communicable Diseases

B-0001	Epidemiology; identify modifiable risk and protective factors for prevention and development of major NCD including cardiovascular diseases, cancers, chronic respiratory diseases, diabetes and, mental disorders, <b>and the top ten cancers in Hong Kong (by incidence or mortality) according to the Hong Kong Cancer Registry's latest statistics</b>
--------	--

B-0010	<b>Identify and evaluate novel school-based interventions to promote students' mental health</b>
--------	--



# C. Primary Healthcare

- Enhance primary care services for NCD
- Effectiveness of collaborative care service model for NCD
- Innovative service models
- Family doctor concept
- Adopt a life course preventive care approach and evaluate effectiveness and cost-effectiveness
- Enhance usage of primary healthcare services
- Promote oral health**  **NEW**

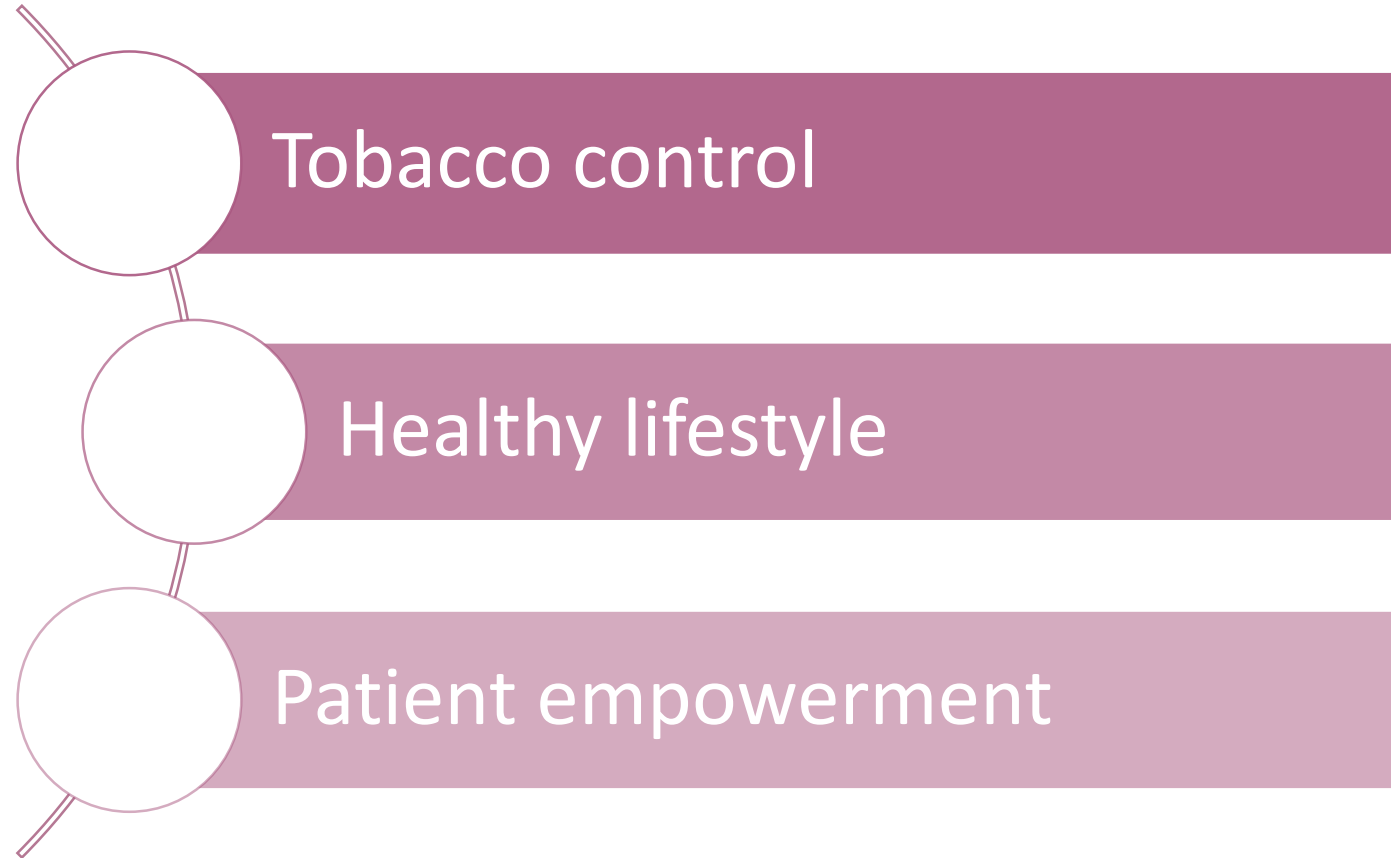
# C. Primary Healthcare

<b>C-0007</b>	<b>Develop strategies and measures to promote oral health among preschool children, adolescents, elderly, and underprivileged groups</b>
---------------	--



**NEW**

# D. Preventive Medicine



# D. Preventive Medicine

D-0002

Develop innovative methods, measures, and study designs to assess tobacco use knowledge, attitudes, perceptions, and behaviours and other related addictions **unhealthy behaviours such as harmful use of alcohol, addiction to** video gaming and drug abuse; including measures to best predict future use of tobacco products other than conventional cigarettes



**NEW**

# E. **Digital Health** and **Advanced Technology**



Genetics/genomic in clinical applications

Big data analytics of clinical information

**Digital technology for population health improvement and healthcare service delivery**

**Advanced technology for smart care provision in community and hospital settings**

**NEW**

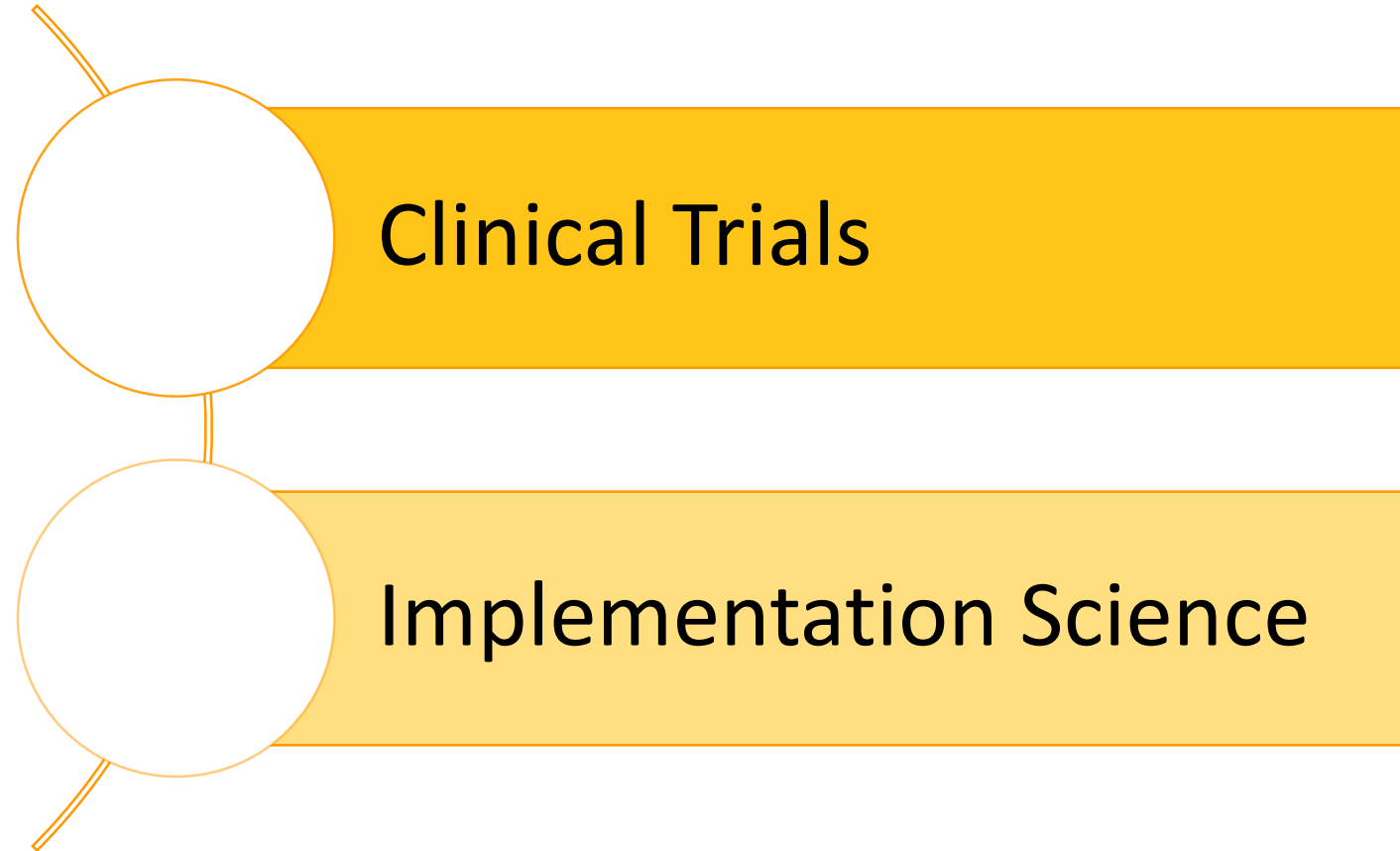
# E. Digital Health and Advanced Technology

E-0003	Develop and evaluate the use of <b>digital technology</b> to improve the enhancement of population health and the delivery of healthcare services, especially in <b>health promotion, health self-monitoring, self-care support, primary healthcare, and healthcare journey management</b>
E-0004	Develop, apply and evaluate advanced technology to enable smart care <b>provision in community and hospital settings</b> including smart ward, smart clinic, smart pharmacy



**NEW**

# F. Clinical Trials & Implementation Science







# **Submission and Timeline**

---

# Grant Size & Types

- **ONE** application per Principal applicant (PA)
- Application with **single applicant** is **not allowed**



\$1.5 million for  
up to 3 years

or

Seed Grant:  
\$0.5 million for  
up to 3 years

Research  
project

or

Health  
promotion  
project

New proposal

or

Resubmission



<b>Grant ceiling</b>	<b>≤ \$500,000</b>
<b>Criteria</b>	<ol style="list-style-type: none"><li>1. Larger-scale pilot study* <b><u>or</u></b></li><li>2. Small-scale study with achievable objectives</li></ol>

\*Pre-defined outcome indicators are required to scale up a pilot study

# Eligibility

---



Locally based tertiary institutions, hospitals, medical schools, non-governmental organisations or other appropriate centres, units and services.



PA shall be employed by an administering institution (AI) which is based in Hong Kong at the time of application and throughout the project period.



Inform us immediately if you plan to leave the local institution after submission of application. Failure to do so will result in disqualification of the application.

# Key Updates on Submission

- ! Single applicant is not allowed
- ! PA is required to indicate a Co-Applicant (Co-A) to take up the PA role as a **contingency measure**
- ! PA and Co-A(s) are required to provide their **h-index and years of research experience** in relevant field(s) of the application
- ! Publication cost is increased to a maximum of **HK\$30,000**



# Section 10 Proposal

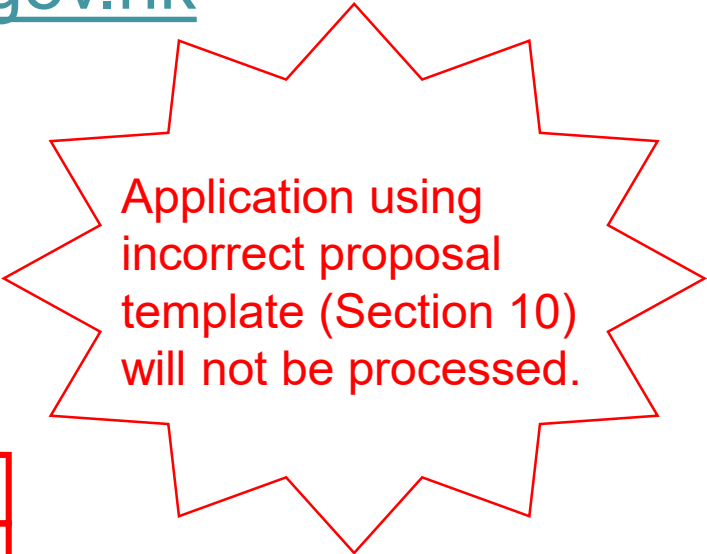
- Two different templates for Sections 10 (a) – (h) must be attached as a PDF file to the e-Form

[2024-HMRF-Open-Call--Research-Proposal+](#)

[2024-HMRF-Open-Call--Health-Promotion-Proposal+](#)

- To download from <https://rfs.healthbureau.gov.hk>

- Briefing Sessions on Grant Applications for the 2024 Open Call for Investigator-initiated Projects
- Thematic Priorities updated
- Guidance Notes on Grant Application updated
- Explanatory Notes on Grant Application updated
- Electronic Application Form (e-Form): Available on eGMS  
(Path in eGMS: Project > Application > View Application > Application Call > Web-based Online e-Form)
- Proposal Template for Research Project (Section 10(a)-(h)) updated
- Proposal Template for Health Promotion Project (Section 10(a)-(h)) updated



Application using incorrect proposal template (Section 10) will not be processed.

# Resubmission

Applications rated “2” or above in a previous HMRF Open Call

Rated “2”

Rated “3”/”4”

Substantial revision to the proposal

- Structured **point-by-point response to address all** GRB and/or reviewers’ comments in the GRB Assessment Report
- Highlight the **major changes in different colour** in the Project proposal

# Resubmission

---

- To be assessed on the **continued relevance** of the application with respect to:
  - a) Knowledge gaps
  - b) Policy needs
  - c) Translational value
  - d) **Prevailing thematic priorities** at the time of resubmission
- Having satisfactorily addressed comments of GRB/reviewers is **not a guarantee** of funding



# New Submission

For previously not funded applications:

**Previous HMRF  
Open Call / Research  
Fellowship Scheme**

**OR**

**Other funding  
agencies  
(local and overseas)**

- Can be submitted as a new application after extensive changes or improvements made with full justifications

# Proper Declaration of Conflict of Interest and Sponsorships

**PA** and **all Co-A(s)** must declare:



Any actual or perceived conflict of interest  
e.g. receive funding or assistance from industries, or  
use grant monies to purchase products/services from  
business owned by the AI or any of the applicants



Any sponsorship received/to be received related to any  
commercial product for this application

# Declaration of Similar/ Related Studies and Other Funding

PAs and all Co-As should declare –



Similar funded /recommended for support proposals in the past 3 years



Similar not funded proposal(s) in the past 3 years



Submitted current or similar proposal(s) pending funding decision



Intention to submit this or similar application in the next 6 months

Notify the Secretariat the funding decision immediately once available!

Failure to make declaration may lead to application **not eligible** for further processing and **penalty** as determined by the Research Council

# Management of Track Records of Applicants w.e.f. 1 Nov 2024

## Scientific Misconduct

- Plagiarism / Self-plagiarism
- Falsification / Fabrication
- Double dipping not declared
- Conflict of Interest not declared
- Non-disclosure of submission of similar/related proposals in the application
- Non-disclosure of similar/related research work in the application

## Non-Compliance

- No submission of Final Report by deadline without valid justification
- Early termination without valid justification
- Incomplete project without valid justification
- Final report graded “Unredeemable” or “Unacceptable” or “Not accepted”

## Level of Penalty & Penalty Actions

- Light / Medium / Heavy / Serious / Critical
- Warning letter
- Disqualification of related or all submitted applications
- Debarment from 1 to 5 years in all capacities in all funding schemes
- Partial payment or recovery of grant

# Submission of Application

---



Through **eGMS** by **31 March 2025 (6:00 pm HKT)**



Your institution's **internal deadline**, if any

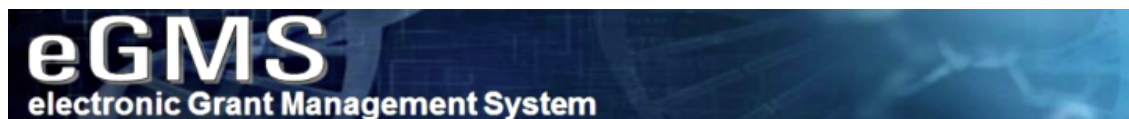


Signatures of all applicants, Head of Department, and authorised persons on behalf of the AI and finance office are required



Receive acknowledgement email upon successful submission of application via eGMS

# eGMS – Online Submission



Welcome to the electronic Grant Management System (eGMS) of the Research Fund Secretariat of the Research and Data Analytics Office under the Health Bureau, HKSAR.

The eGMS is an online platform which supports electronic submission and assessment of grant applications to the Health and Medical Research Fund (HMRF) and reports of HMRF-funded projects as well as dissemination of project results.

By setting up a single eGMS account, each user can manage all of the activities under his/her purview using the eGMS platform.

### Login to eGMS

Email:

*Your login email is your email address.*

Password:

[Forgot your password?](#)

[Forgot your login?](#)

[More Info >](#)

[Frequently Asked Questions](#)

### Account Registration *(FOR APPLICANTS ONLY!)*

### Notes to Grant Review Board (GRB) Members/ External Reviewers

eGMS account has already been registered for GRB Members and External Reviewers. Please contact the Research Fund Secretariat (Email: [egmsenquiry@healthbureau.gov.hk](mailto:egmsenquiry@healthbureau.gov.hk)) if you have any questions.

For security reasons, the eGMS supports the following browsers: Google Chrome, Mozilla Firefox or Safari 7+ with Transport-Level-Security (TLS) protocol version 1.2. For details, please click [here](#).

If you have any queries or encounter difficulties relating to eGMS, please send email to [egmsenquiry@healthbureau.gov.hk](mailto:egmsenquiry@healthbureau.gov.hk)

[Terms and Conditions](#) [Privacy Policy Statement](#) [Personal Information Collection Statement](#) [Disclaimer](#)



# **Funding Decision**

---

# Upon Receiving Funding Decision

- In late September 2025
- For applications rated “3” or “4”:
  - To respond to GRB and/or Reviewers’ comments and submit a revised application **within three weeks**
  - To declare any similar/related research work done before the project commencement date proposed in the application form after receiving the decision email





# Regulatory/Ethics/Third-party Data

## Regulatory/Ethical Approvals/Consent for Accessing Third-party Data

- Submit within **12 weeks** from the date of decision email (or specified by the Secretariat)
- Bear(s) the **same project title** as that in the approved application
- The **protocol/scope** included in such approval(s)/evidence for accessing third-party data must be the **same** as that in the application

Certificate for Clinical Trial/Medicinal Test of pharmaceutical products;  
Certificate for Clinical Trial and Medicinal Test of proprietary Chinese medicines

- Confirm with Department of Health if required as early as practical

# Points to Note – Outstanding deliverables



The grant may also be withdrawn if:

Outstanding/overdue:

- Report(s)
- Certified Financial Statement(s)
- Audited Accounts
- Outcome Evaluation Questionnaire(s)

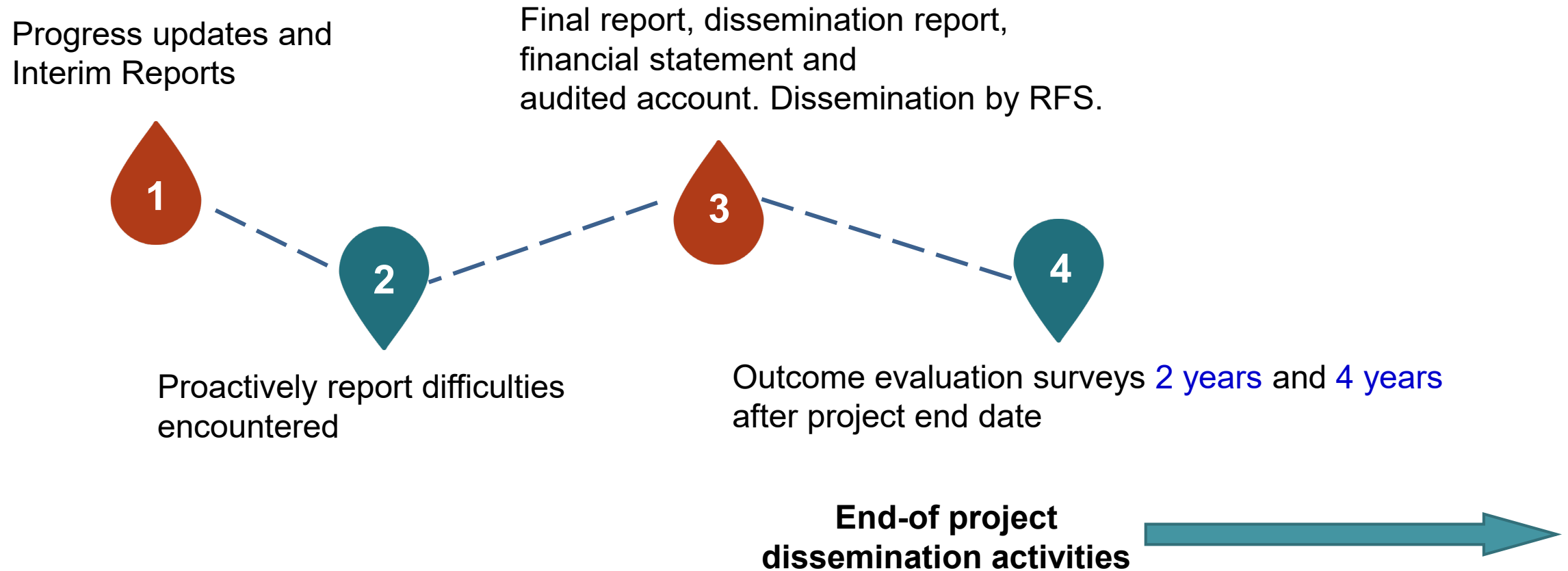
not submitted within 6 months  
from grant approval date



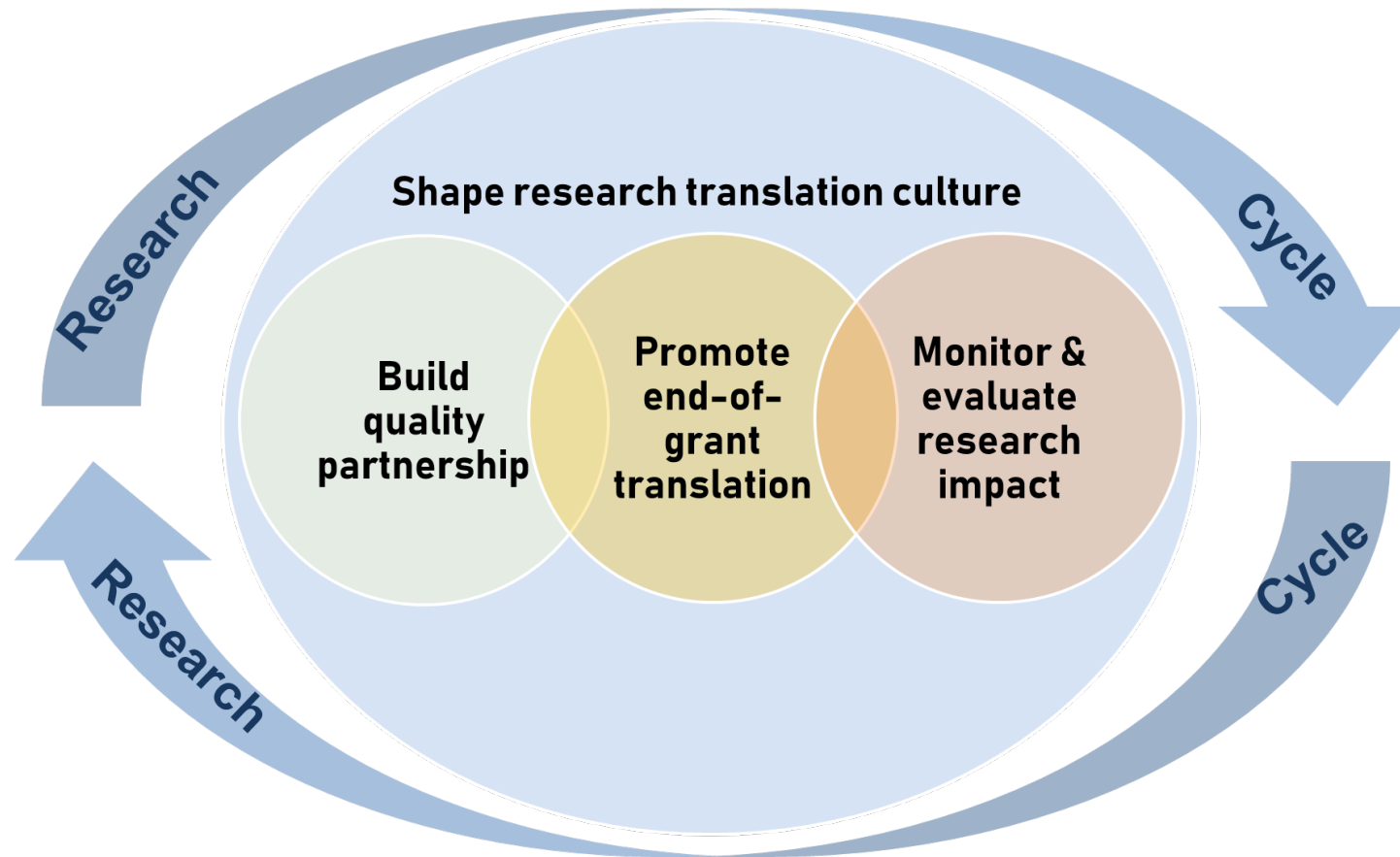
# **Project Commencement**

---

# Points to Note – Funded Projects



# Research Translation Strategy of HMRF



Research funded by HMRF is expected to generate impact beyond academia

Researchers must recognise their role in research translation

Research translation should be promoted throughout research cycle

# Research Translation

Covers the processes of synthesis, dissemination, exchange and application of research findings to improve individual and population health through

- Informing further research, clinical practices, healthcare services, health policies;
- Changing health behaviours; and
- Strengthening healthcare systems.

# Research Translation



Journal publication and conferences suffice?



Liaise with end-users of your research findings: before, during and after project (healthcare professionals? patients? community partners? general public)



Disseminate findings in format and channels suitable for your end-users, e.g. infographics, workshops, professional lectures, press conferences, newspaper, website, social media

# Research Translation



Drive the application/ adoption of your findings

Established professional network	Adopted as guidelines	Adopted by community partners	Influenced clinical services	Adopted as public health practice
Fellowship recipient initiated an Asian anaphylaxis registry	Findings informed HK College of O&G's guideline on preferred test of cervical cancer screening	Novel service model in promoting HPV vaccination among MSM adopted by a NGO	Ortho-geriatric multidisciplinary care model adopted by Hospital Authority for fragility hip fractures patients	Sewage testing adopted as a surveillance tool by the Government in monitoring COVID-19



# Outcome Evaluation Surveys

## - 2<sup>nd</sup> and 4<sup>th</sup> year after project end date

### Research Studies

#### Buxton-Hanney Research Payback Framework

- Knowledge generation
- Capacity building
- Policy or decision making
- Changing behaviour or practice
- Dissemination

### Health Promotion Projects

#### RE-AIM Framework

- Reach
- Effectiveness
- Adoption
- Implementation
- Maintenance

#### Purpose:

- ✓ Assess the outcomes / achievements of individual projects for reporting to the Research Council
- ✓ Select impactful projects for presentation and receive awards at Health Research Symposium
- ✓ Further disseminate the findings by the Secretariat



# **Examples of Early Rejected Applications**

---

# Examples

## Out-of-scope

Basic/Preclinical research  
under AMR/HHS

A **basic/pre-clinical study** which aims to determine the treatment effect of a traditional Chinese medicine/herbal formula for a particular disease using mouse models.

## Out-of-scope

Research under ID with low  
public health implication

A viral evolutionary biology study on sequencing the samples collected from various animal sources and the findings is **unlikely to identify new viruses that can infect human** and cause public health threats

# Examples

**Unclear Local  
Relevance**

- A study to establish an early detection model of mental disorders using a dataset outside Hong Kong that contains regionally variable parameters such as genotypes, environmental and cultural factors, and social behaviours.
- A study to examine the tumour microenvironment / gut microbiome of cancer patients on chemotherapy. All clinical samples were obtained from non-Chinese cancer patients outside Hong Kong. Unclear how the research findings based on non-local data will benefit patients' health and/or healthcare system in Hong Kong.

Please refer to [Appendix A](#) of the **Guidance Notes for examples**

# Examples



**Immature Application**

- Insufficient details for peer review:
  - Methodology, sampling, study design, description of primary and secondary outcomes, data analysis plans, potential pitfalls and contingency plans

# Examples



## Non-compliance with Resubmission Requirements

For resubmission of a HMRF application previously rated “2” or above:

- No point-by-point response to address all comments in the GRB Assessment Report or the revised proposal without highlights of the major changes in different colour
- If you disagree with the comments and choose not to change your proposal, please state your rationale

# Examples



**Non-compliance with  
Submission  
Requirements**

Applications not funded by the HMRF or other funding agencies (local or overseas):

Not providing the required materials:

- Previously submitted similar application
- Decision letter(s) and reviewers' comment(s), if available
- Point-by-point responses to address all reviewers' comment(s), if available
- Revised proposal with major changes highlighted in different colour
- Explanation if comments or point-by-point responses are not submitted

# Examples

**Under-declared of  
Previously Similar  
Rejected Application(s)**

- Under-declared a similar grant proposal rejected in a **previous HMRF application round or by another funding agency**
- Study aims/ objectives/ hypothesis/ study design/ methodology/ data analysis plan, etc. are similar to the previous submission
- No point-by-point responses to address the previous reviewers' comments
- Current proposal is not substantially revised



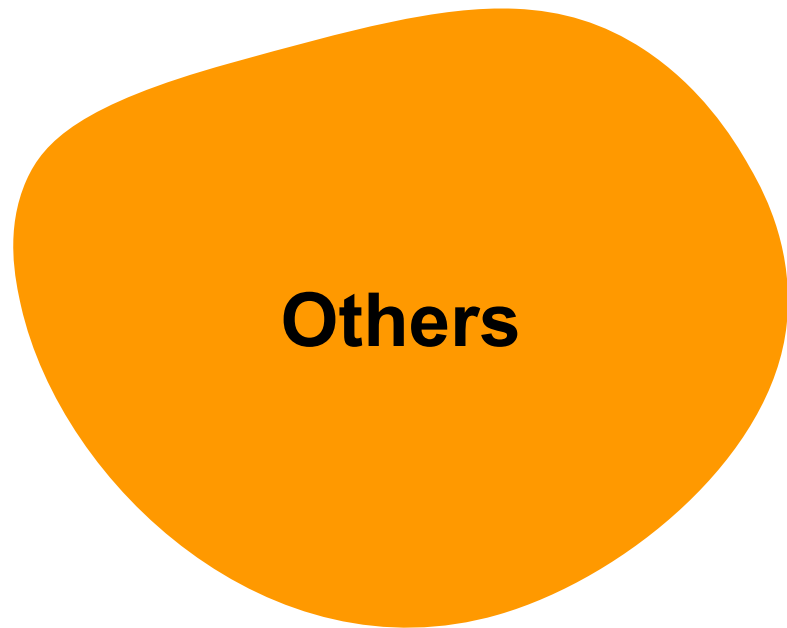
# Examples

**Under-declared of  
Similar / Related  
Application(s)**

Similar / related proposal(s) to HMRF or any of its preceding funding schemes, or other funding agencies (local or overseas) in the application:

- Proposal(s) submitted in the past 3 years from the closing deadline
- Proposal(s) submitted to the same application round of HMRF or same year of different funding schemes under HMRF
- Proposal(s) to be submitted in the next 6 months from the closing deadline

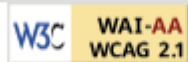
# Examples



- Wrong proposal template used (e.g. HHS/AMR/ID must use research project template)
- Missing items under Section 10(a) – (h) of proposal template
- Exceeding 4,000 words (Section 10(a) – (d))
  - Any essential information provided in the **attachment file** (e.g. Appendices) will be included in word count

# Further Information

- Home
- What's New
- Council & Committees
- Policies and Guidelines
- Annual Reports
- Call for Application
- Funds
- Funded Project
- Past Events
- Publications
- Useful Links
- Contact Us



## Investigator-initiated Projects

---

The HMRF invites applications for investigator-initiated research projects and health promotion projects.

The normal grant ceiling for a proposal is HK\$1,500,000 and the usual duration is 3 years. Higher grants or grants of longer duration may be awarded where justified.

Larger-scale pilot studies, such as those evaluating trialability and scalability for future implementation, or small-scale research with achievable objectives, can be submitted to seed grant with a grant ceiling of \$500,000 per project.

- [Briefing Sessions on Grant Applications for the 2024 Open Call for Investigator-initiated Projects](#)
- [Thematic Priorities](#) updated
- [Guidance Notes on Grant Application](#) updated
- [Explanatory Notes on Grant Application](#) updated
- Electronic Application Form (e-Form): Available on [eGMS](#)  
(Path in eGMS: Project > Application > View Application > Application Call > Web-based Online e-Form)
- [Proposal Template for Research Project \(Section 10\(a\)-\(h\)\)](#) updated
- [Proposal Template for Health Promotion Project \(Section 10\(a\)-\(h\)\)](#) updated

# Further Information

The screenshot shows the top navigation bar of the Research Fund Secretariat website. On the left is the logo of the Research Fund Secretariat Health Bureau, with text: "Research Fund Secretariat Health Bureau, The Government of the Hong Kong Special Administrative Region of the People's Republic of China". On the right is the "HONG KONG ASIA'S WORLD CITY" logo. Below the navigation bar is a search bar with "Enter search keyword(s)", a magnifying glass icon, and links for "SITE MAP" and an email icon. There are also "AAA" accessibility settings, "Search", and "Share" buttons. The main banner features a blue header with "Research Fund Secretariat" and a large title: "2024 Open Call for Investigator-initiated Projects". Below the title, it states "Closing date: 31 March 2025 (6:00 pm Hong Kong time)" and "Briefing sessions will be held on 9 and 15 January 2025". A link "Click here for more details" with a right-pointing arrow is at the bottom left. The background of the banner is a light blue grid with various medical and scientific icons like a stethoscope, pills, a shield, a DNA helix, and a microscope.

Research Fund Secretariat

## 2024 Open Call for Investigator-initiated Projects

Closing date: 31 March 2025 (6:00 pm Hong Kong time)

▶ Briefing sessions will be held on 9 and 15 January 2025

[Click here for more details](#) ▶▶



Enquiry emails:

[rfs@healthbureau.gov.hk](mailto:rfs@healthbureau.gov.hk) (General)

[egmsenquiry@healthbureau.gov.hk](mailto:egmsenquiry@healthbureau.gov.hk) (eGMS)



# Thank You

---